

WEREWOLF

Makeup Kit



WEREWOLF

Makeup Kit

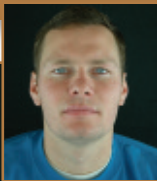
Makeup Artist: Cheryl Vaughn
Model: Jeffrey Salls
Photographer: Marc Salls



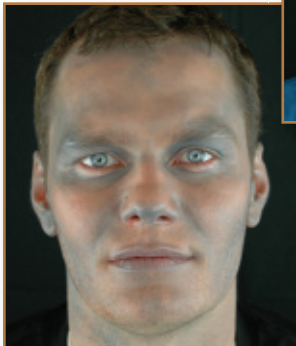
Mehron, Inc. Chestnut Ridge, NY 10977
Mehron Ltd. London EC1M 4BH
www.mehron.com



Easy
Step-by-Step
Instructions



Start with clean, moisturized skin.



Step 1 – Apply the grey cream makeup with a sponge applicator to areas around the face to provide depth.



Step 2 – Using the sponge applicator, apply the brown cream makeup to the areas around the grey. Blend in the grey. Keep the areas around the eyes dark. Lightly press Mehron's Colorset Powder onto the makeup and dust off the excess.



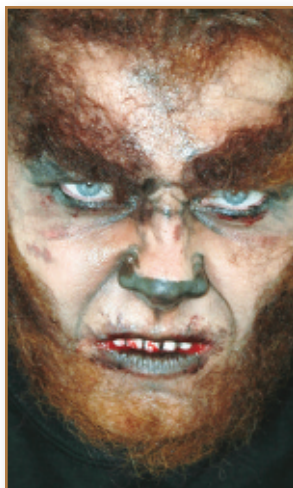
Step 4 – Using the Black Pencil Liner, draw lines around the nose and eyes. Thicken the eyebrows. Darken the end of the nose. Lightly press Mehron's Colorset Powder onto the makeup and dust off the excess.



Step 5 – Apply crepe hair to the areas around the hairline, eyebrows and along the jawline. Crepe comes in a braid and requires separation and straightening. Unbraid the crepe hair and use a steam iron to straighten by placing the hair under a dry cloth. Never apply heat directly to the hair.

Cut 2" sections of the crepe hair and spread the hair out with the fingers. Apply Spirit Gum to the area receiving the hair. Allow it to become tacky. Press the ends of the hair into the glue and hold.

Tip: Start near the neck and work forward layering the hair. When you are done, use your fingers to comb through the hair.



Step 6 – Dry the teeth with a towel, apply the Tooth FX Blood and let it dry. Caution: Tooth FX may permanently stain veneers, consult a dentist before using.