

WITCH

Makeup Kit

WITCH

Makeup Kit

Artist: Mario Ceja
Model: Nicole Deventhal
Photographer: Jessica Lovino



Mehron, Inc., Chestnut Ridge, NY 10977
www.mehron.com

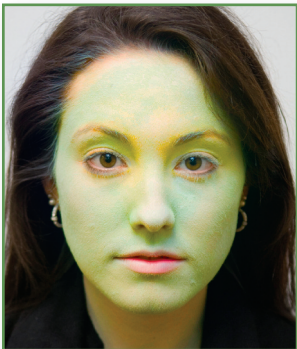


*Easy
Step-by-Step
Instructions*





Step 1 – Start with clean dry skin. Use Mehron's *Spirit Gum* to glue the wart to the nose. (Hint: Let the glue air dry on the wart a few minutes then apply)



Step 2 – Evenly apply the green cream makeup with the sponge applicator. If you would like to lighten the color, apply small amounts of the white or yellow to the green and blend evenly. Lightly press Mehron's *Colorset Powder* into the foundation with the *Powder Puff*.



Step 3 – Apply small amounts of white to the bony areas around the face: above the eyebrows, on top of the nose, the cheekbones and on the chin. Use the sponge to blend the edges of the white into the foundation. Lightly powder with Mehron's *Colorset Powder*.



Step 4 – Use the black or brown to draw in the wrinkle and heavy character lines. Color in behind the eyes, lines under the eyes and between the nose and mouth. Blend the lines in an upward motion into the foundation. Lightly Powder with Mehron's *Colorset Powder*.



Step 5 – Apply black to the lips. To color the teeth, use Mehron's *Tooth FX Nicotine/Decay*. Dry the teeth and brush on solid or in spots, allow to dry.



Step 6 – Repeat Step 2 on the hands to complete the look.

Now go out and have a wicked time.