

# Dancer

**Makeup Kit**



**mehron**

**Easy Step-by-Step  
Instructions for Child,  
Teen and Adult**



Celebré Pro-HD  
Cream Foundation  
5-Well Tray



L.I.P Cream  
Big Apple  
103N-RR



Mascara  
Black  
209-B



E.Y.E Liner Pencil  
Black 115-B &  
Stageline Brush 302



CHEEK Cream  
Geranium  
104N-10



GLOSSTONE  
Pearl Frosted  
126F

# Products For Creating Dancer Makeup

for Children, Teen and Adult Dancers



E.Y.E Powders  
Black 207-B &  
Wheat 207-NW



Glitter Dust  
Holographic Silver  
127C-H



Barrier Spray  
145



Precious Gems  
Diamond  
203-DD



Celebré Pro-HD  
Loose Mineral  
Finishing Powder  
215-TR - Translucent



Powder Puff  
123

# Child Dancer





## PREP THE SKIN

**Step 1:** Cleanse, tone and moisturize your face and neck. Hydrating the skin with moisturizer and/or primer prior to applying makeup will keep skin nourished and healthy.

## FACE

Applying foundation is one of the most important steps in your makeup application. **Celebre Pro-HD Cream Foundation** provides an especially flawless base for the rest of your makeup. It is well suited for all skin types, because it moisturizes while adding luster.



**Step 2:** Lightly dab the **Celebre Pro-HD Cream Foundation** onto your face with the sponge provided or with a damp **Mehron Face Smoothie** sponge (as seen in image, product not included in kit). Start applying your foundation in the center of your face and blend out and downwards. For a flawless finish, be sure to blend the foundation especially well at the jaw and hairline.

**Step 3:** Finish your flawless face by loosely applying **Celebre Pro-HD Loose Mineral Finishing Powder** with a **Powder Puff** over your foundation to create a matte finish.



## EYES

**Step 4:** Begin by applying **E.Y.E Powder** in Natural Wheat shade all over your eyelid with **Mehron's #320 Stageline Brush**. Continue by gently applying **E.Y.E Pencil** in Black into the lash line and smudging the eye liner with **Mehron's #320 Stageline Brush** to naturally define the lash line. Finally, apply Mehron's **Mascara** in black. The best way to apply mascara is bottom lashes first and then the top lashes. Give a few moments in between the top and bottom lashes to give mascara a chance to dry.



## CHEEKS

**Step 5:** Lightly apply a small amount of **CHEEK Cream** in Geranium color on the apples of the cheeks with the index finger and blend into the skin.



# Child Dancer

## LIPS

**Step 6:** Apply the **Mehron L.I.P Cream** in Big Apple Red with your finger to give your lips a soft wash of color. Complete the look by applying a thin layer of Mehron's **GLOSTONE** in Pearl Frosted shade to give a more glossy look.



## EXTRAS

**Step 7:** For a more dramatic appearance, press **Glitter Dust Powder** in Silver with your index finger on the higher part of the eye lid and along the highlight of the cheek bone.



## FINISH

**Step 8:** Mist **Barrier Spray** onto face to set and preserve the makeup application.





# Teen Dancer







## PREP THE SKIN

**Step 1:** Cleanse, tone and moisturize your face and neck. Hydrating the skin with moisturizer and/or primer prior to applying makeup will keep skin nourished and healthy.

## FACE

Applying foundation is one of the most important steps in your makeup application. **Celebre Pro-HD Cream Foundation** provides an especially flawless base for the rest of your makeup. It is well suited for all skin types, because it moisturizes while adding luster while offering outstanding coverage for fine lines and wrinkles.



## STEP 2

Lightly dab the **Celebre Pro-HD Cream Foundation** onto your face with the sponge provided or with a damp **Mehron Face Smoothie** sponge (as seen in image, product not included in kit). Start applying your foundation in the center of your face and blend out and downwards. For a flawless finish, be sure to apply some **Celebre Pro-HD** to the ear and blend the foundation especially well at the jaw and hairline.

## STEP 3

Finish your flawless face by loosely applying **Celebre Pro-HD Loose Mineral Finishing Powder** with a **Powder Puff** over your foundation to create a matte finish.



## EYES

**Step 4:** To begin, draw a thick line with **Mehron E.Y.E Pencil** in black on the top lash line extending out with a wing tip. Go over it several times to increase shade.



**Step 5:** Apply the **Precious Gem Powder** in Diamond on the ball of the eyes. Press the pigment and gradually build up the color with **Mehron's Stageline #320 Brush**. Lightly dust pigment in the inner corner of the eye and slightly underneath.



Line the top of the eye with the **E.Y.E Pencil** black to cover up excess pigment on the lash line. Also line the inner rim of the bottom eye make the eyes pop. Finally, apply Mehron's **Mascara** in black. The best way to apply mascara is bottom lashes first and then the top lashes. Give a few moments in between the top and bottom lashes to give mascara a chance to dry.



# Teen Dancer

## CHEEKS

**Step 6:** Apply 3 dots of **L.I.P Cream** in Big Apple shade to apples of the cheeks. Gently blend together. If the product is too heavy, apply **Celebre Pro-HD Loose Mineral Finishing Powder** over it to soften it a bit.



## LIPS

**Step 7:** Apply your shade of **Celebre Pro-HD** foundation on the lips to prepare for semi-nude lip.

Using a clean **#320 Stageline Brush**, apply **CHEEK Cream** in Geranium to the lip softly. Finish with Mehron's **GLOSSTONE** in Pearl Frosted shade to give a more glossy look.

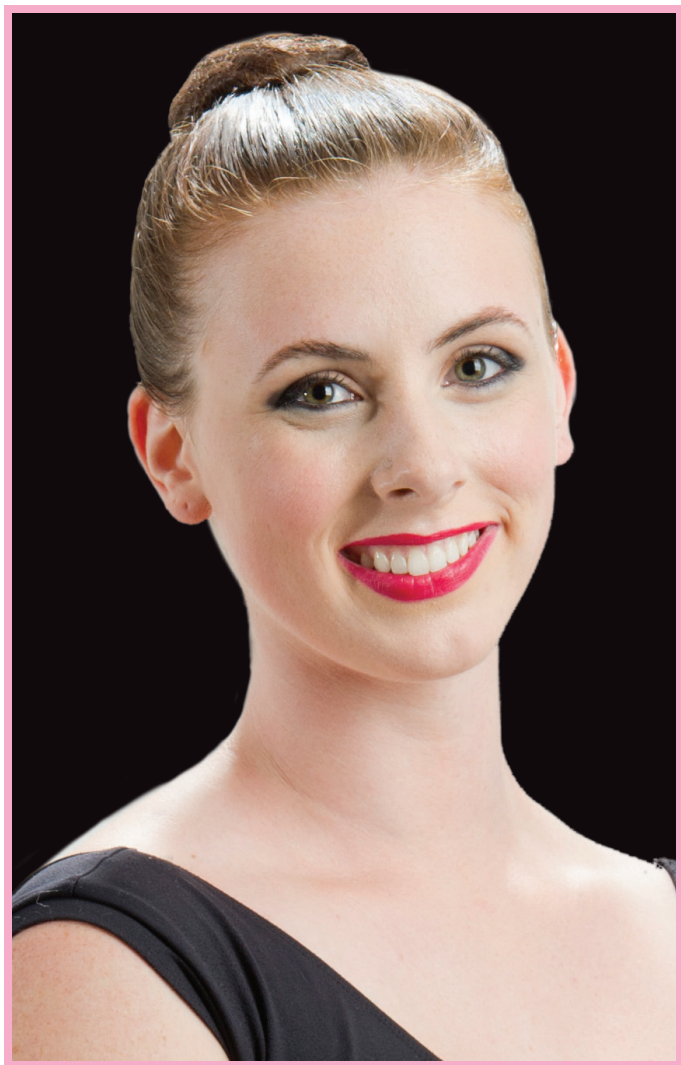


## FINISH

**Step 8:** Mist **Barrier Spray** onto face to set and preserve the makeup application.



# Adult Dancer





## PREP THE SKIN

**Step 1:** Cleanse, tone and moisturize your face and neck. Hydrating the skin with moisturizer and/or primer prior to applying makeup will keep skin nourished.

## FACE

### **Celebre Pro-HD Cream Foundation**

provides an especially flawless base for the rest of your makeup. It is well suited for all skin types, because it moisturizes while adding luster and offers outstanding coverage for fine lines and wrinkles.

**Step 2:** Lightly dab your shade of **Celebre Pro-HD Cream Foundation** with sponge provided or with damp **Mehron Face Smoothie** sponge (as seen in image, not included in kit). Start applying your foundation in the center of your face and blend out and downwards. For a flawless finish, apply some to the ear as well. Blend the foundation in especially well at the jaw line and hairline. **Celebre Pro-HD** has a buildable coverage that allows you to built upon the amount of desired coverage.

**Step 3:** Finish by loosely applying **Celebre Pro-HD Loose Mineral Finishing Powder** with **Powder Puff** over your foundation for a matte finish. This will set the foundation and prevent excess oiliness.





## EYES

**Step 4:** Apply **E.Y.E Powder** in Natural Wheat Shade all over the lid with **Mehron's #320 Stageline Brush** provided.



Apply **E.Y.E Powder** in Black Onyx shade to the crease and outer third of the eye ball with the **Stageline #320 Brush**. Use the tip of the (clean) brush to blend the shadow in the crease after color has been applied.



**Step 5:** Line the eye with the **E.Y.E Pencil** in black on the top and the bottom for a defined look. For a fresher look, only place liner on the top. Finally, apply Mehron's **Mascara** in black. The best way to apply mascara is bottom lashes first and then the top lashes. Give a few moments in between the top and bottom lashes to give mascara a chance to dry.



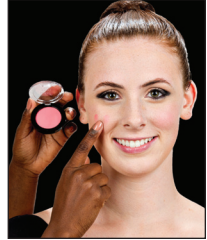
Sponge away fall out from Black Onyx **E.Y.E Powder**.



# Adult Dancer

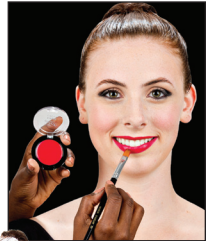
## CHEEKS

**Step 6:** Apply 3 dots of **CHEEK Cream** in Geranium shade to apples of the cheeks. Gently blend together. If the product is too heavy, apply **Celebre Pro-HD Loose Mineral Finishing Powder** over it to soften it a bit.



## LIPS

**Step 7:** Using a clean **#320 Stageline Brush**, apply **L.I.P Cream** in Big Apple shade to the lips. Be sure to press **L.I.P Cream** into lips and finish with Mehron's **GLOSSTONE** in Pearl Frosted shade to give it a more glossy look if desired.



## FINISH

**Step 8:** Mist **Barrier Spray** onto face to set and preserve the makeup application.







### Credits

- Photography by Richard Esposito
- Makeup & Hair Artist: Brandalyn Fulton  
The Juilliard School, NYC
- Models:  
ADULT: Jenna Pollack of  
The Juilliard School, NYC  
TEEN: Julia Kurlnader  
CHILDREN: Natalie & Sofia Lieto



Mehron, Inc., Chestnut Ridge, NY 10977  
[www.mehron.com](http://www.mehron.com)